

Weather Watch

(In Collaboration with the World Bank)

With the aim of keeping our members updated, a new "Weather Watch" section is added to the MEU in collaboration with the World Bank. "Weather Watch" will provide localised weather forecasts and insights for Sri Lanka, enabling businesses to proactively plan, manage disruptions, and make informed decisions.

A period of dry and hot conditions expected across Sri Lanka into October. Heavy showers and thunderstorms likely to develop from mid-October onwards introducing lightning and flash flood related impacts to services.

There is a growing signal for a period of dry and hot weather during the rest of September into the first week of October 2024 which may degrade critical infrastructure & networks performance and could result in health related impacts on staff and customers.

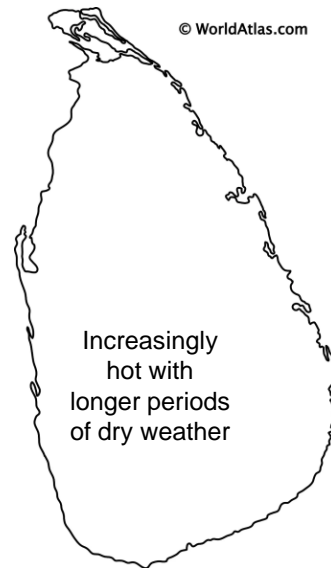
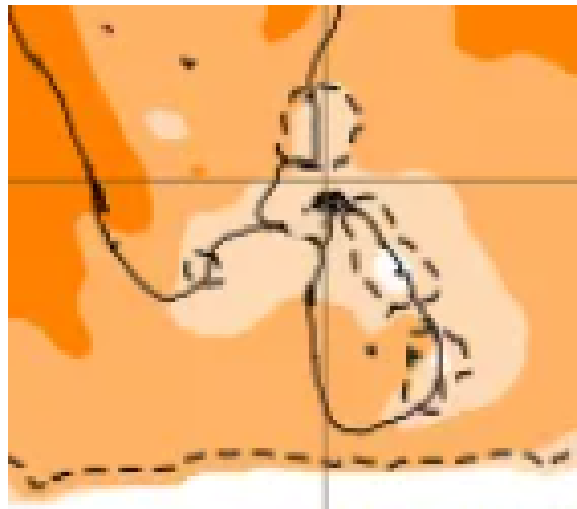
Weather patterns may change to more showery conditions from mid-October possibly leading to impacts from heavy showers and thunderstorms. Frequent, intense lightning, strong winds and flash flood from these thunderstorms could lead to power outages and damage to exposed infrastructure systems.

Our advice is still to monitor conditions, review business continuity plans and to check the resilience of key infrastructure facilities to severe weather, especially from lightning, floods and heat.

Members should also check daily for the latest warnings, advice and guidance from [Department of Meteorology \(DoM\)](#) , [National Building Research Organization \(NBRO\)](#), and [Disaster Management Center \(DMC\)](#).

Weather Watch cont'd

Period: 16th to 19th September 2024



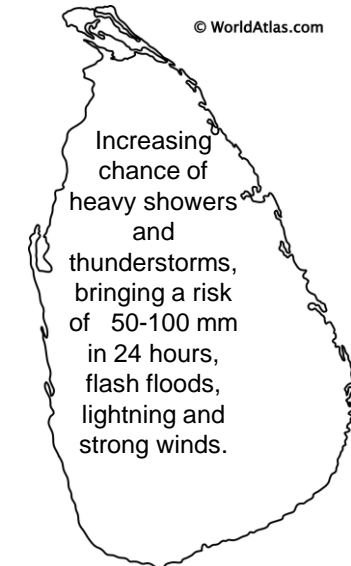
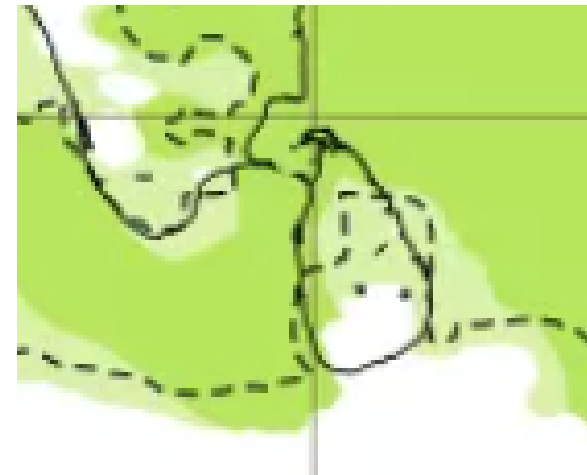
ECMWF 7-day mean anomalies of precipitation for period 16th to 23rd September 2024.

Green = wet

Orange = dry

This shows dry conditions predominating across Sri Lanka during this period.

07th to 14th October 2024



ECMWF 7-day mean anomalies of precipitation for period 07th to 14th October 2024.

Green = wet

Orange = dry

This shows an uptick in heavy showers and thunderstorms with a focus towards west and southwestern and northeastern coastal districts.